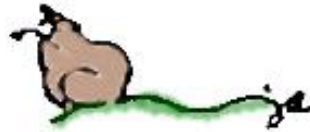




**ALL TERRIER CLUB OF
WESTERN
WASHINGTON
SEPT 2018**



Editor's Note:

Hope everyone had a fantastic summer even with the smoke and heat! I am experimenting with format and readability on all devices; let me know what you think. As the newsletter might be given out, do you want your telephone number printed next to litters, items for sale, sort of thing? The FDA alert I thought was an interesting read, and highlighted these foods should not be the main ingredient in a dog's diet. Thanks for all your input for the newsletter. Some articles I have saved for the next newsletter. Your input is what's needed and makes this an interesting read! All Photos in JPEG format please and in the meanwhile...Happy Fall and have fun!

Up Coming Events: Don't forget the interesting breeding seminar coming up! More information can be found in the flyer along with an entry form. Not much else to report as we go into the fall season.

Brags and Wags Congratulations Everyone!

Congratulations to Karin Parish and her Raindancer Sealyham litter, two girls are on the way to show homes, one in Seattle and one in St. Louis! Good luck in the ring girls!

Jenny Merritt writes of her Staffordshire Bull Terrier who finished his championship by going Winners Dog and Best of Winners for two Majors and to finish at their specialty show! Now that's fabulous! Please read the incredible story of this boy, from rescue to champion!

Barb Decker writes, New Champions from Snowtaire. August, The Lakeland Terrier; Snowtaires A Curve in Time, co-owned with Margaret Keith, Wire Fox Terrier; Snowtaires JB Magic Moment co owned with Dennis Ahrens and Leslie Kubik, and of course my boy Jack, Snowtaires A Touch of Frost, Lakeland Terrier; Snowtaires as You Like It, with a group four placement at OKC, co owned with Lauren Parker and Laura Eidal, and then in September, 2018, Lakeland Terrier, Snowtaires Dynamic Dylan. What an outstanding summer!

Welcome New Members

We hope to fill this spot up! Anyone you know with a terrier that would like to become a member?

FOR SALE ITEMS

Hattie Good has a hydraulic grooming table for sale. It is large and in very good shape, \$150.00

Barb Decker has the following items for sale
Misc sized “ Old Style” Vari Kennels, Call for sizes and prices. Patriot stacked metal crate set. Purple in color. Both crates have matted tops and grooming arms to use separately if wanted. Asking \$700 o.b.o. If you are looking for something in particular, give me a shout. I may have it and be willing to part with it.

Litters.

Barb Decker has Welsh, Wire Fox and Lakeland puppies.

Board Meeting Notes

Most of you will have already read the minutes. There is a lot of hard work going on to make the matches happen, but here are just a few highlights from the meetings. September meeting was cancelled as other commitments happened to members. If more is wanted in the next newsletter, give me a shout and I can add more, otherwise, the information is in the monthly minutes from the board.

There was a discussion about meetings at shows starting with the Mount Baker Show.

Hattie Good suggested (via Barb Decker) we look into PayPal for dues. It costs an extra \$2.00? Hattie (via Barb Decker) mentioned that a newsletter could be very beneficial with member retention. Lack of communication with the club was mentioned to Hattie several times as she followed up on 2018 dues payments.

Susan Nolen asked how often a newsletter should go out? (Quarterly?) Suggestions to be included in the newsletter were: brags, announcements, health news, President's message, no medical advice, a section for the pet owner, articles about Barn Hunt and Earthdog, a section welcoming new members, a for sale section, a barter corner, a mentor section, upcoming events and seminars and a Terrier Trek, a picnic for pet owners.

A FEW ARTICLES FROM OUR TERRIER GANG

Karen Whalen sent in this from the AKC Event Operations
.....

Who would like to take this opportunity to update your club on changes in the sport, including items recently passed by the Board of Directors. Any questions should be sent to eventnews@akc.org.

Two Shows in One Day Program Changes

Effective January 1, 2019, two all-breed or group club events held on the same day and site will be required to limit their judges to 100 entries per event. Judges can judge a maximum of 175 entries/day according to the *Rules Applying to Dog Shows* Chapter 7, Section 13. This will help clubs run successful efficient events.

Canine Partner Catalog Listing

The AKC supports the ability of Canine Partner (CP) listed dogs to enter and compete in AKC Companion events. The AKC does not record a sire, dam, or breeder(s) on a CP listing. No official AKC documents, such as the event catalog, should list a sire/dam or breeder for CP listed dogs. CP dogs are identified with a MA prefix in their AKC listing numbers.

AKC Event Search & Results Updated

Based on customer feedback, the [AKC Event Search &](#)

[Results](#) has been updated.

Highlights of the updates include:

- The availability of a map-based state search filter on desktop, laptop, and tablet devices.
- The availability of a text-based state search filter on all platforms, including mobile devices. This is done by typing the state name, not abbreviation, into the text field in the location filter and selecting the state from the options presented.
- The ability to search based on a city and mileage radius is still available by clicking on the Search near City tab.
- To make room for the map, a redesign of the page layout for the search filters. Most notable was the movement of the competition type filters into an accordion-type folder, a view that a user would have only experienced in the mobile device view in the previous version of the search.

The ability to use a map to search for events based on states was the number one request of our customers in our post-implementation feedback. We will continue to update the search to improve the experience for our customers.

FDA ALERT POSTED ON THE AKC WEBSITE July 12, 2018

The U.S. Food and Drug Administration is alerting pet owners and veterinary professionals about reports of canine dilated cardiomyopathy (DCM) in dogs eating certain pet foods containing peas, lentils, other legume seeds, or potatoes as main ingredients. These reports are unusual because DCM is occurring in breeds not typically genetically prone to the disease. The FDA's Center for Veterinary Medicine and the Veterinary Laboratory Investigation and Response Network, a collaboration of government and veterinary diagnostic laboratories, are investigating this potential association.

Canine DCM is a disease of a dog's heart muscle and results in an enlarged heart. As the heart and its chambers become dilated, it becomes harder for the heart to pump, and heart valves may leak, leading to a buildup of fluids in the chest and abdomen. DCM often results in congestive heart failure. Heart function may improve in cases that are not linked to genetics with appropriate veterinary treatment and dietary modification, if caught early.

The underlying cause of DCM is not truly known, but is thought to have a genetic component. Breeds that are typically more frequently affected by DCM include large and giant breed dogs, such as Great Danes, Boxers, Newfoundlands, Irish Wolfhounds, Saint Bernards and Doberman Pinschers. It is less common in small and medium breed dogs, except American and English Cocker Spaniels. However, the cases that have been reported to the FDA have included Golden and Labrador Retrievers, Whippets, a Shih Tzu, a Bulldog and Miniature Schnauzers, as well as mixed breeds.

In cases reported to the FDA frequently list potatoes or multiple legumes such as peas, lentils, other "pulses" (seeds of legumes), and their protein, starch and fiber derivatives early in the ingredient list, indicating that they are main ingredients. Early

reports from the veterinary cardiology community indicate that the dogs consistently ate these foods as their primary source of nutrition for time periods ranging from months to years. High levels of legumes or potatoes appear to be more common in diets labeled as “grain-free,” but it is not yet known how these ingredients are linked to cases of DCM. Changes in diet, especially for dogs with DCM, should be made in consultation with a licensed veterinarian.

In the reports the FDA has received, some of the dogs showed signs of heart disease, including decreased energy, cough, difficulty breathing and episodes of collapse. Medical records for four atypical DCM cases, three Golden Retrievers and one Labrador Retriever, show that these dogs had low whole blood levels of the amino acid taurine. Taurine deficiency is well-documented as potentially leading to DCM. The Labrador Retriever with low whole blood taurine levels is recovering with veterinary treatment, including taurine supplementation, and a diet change. Four other cases of DCM in atypical dog breeds, a Miniature Schnauzer, Shih Tzu and two Labrador Retrievers, had normal blood taurine levels. The FDA continues to work with board certified veterinary cardiologists and veterinary nutritionists to better understand the clinical presentation of these dogs. The agency has also been in contact with pet food manufacturers to discuss these reports and to help further the investigation.



FROM RESCUE TO SHOWDOG by Dana and Jenny Merritt Trugrip
Staffordshire Bull Terriers

"A little over 7 years ago we placed a Stafford puppy with a family in Pismo Beach, California. We got regular updates on his progress and photos. Clearly this boy ("Duke") had a great home and was very much loved. About 10 months ago we got a call from a Vet's office that they had "our" dog. He was found wondering in the Arroyo Grande area of California and they scanned his microchip and got our contact information. We contacted his owners and they were relieved that he was found and immediately went to pick him up. We then received another call

of the same type for this dog - identified by his microchip. After checking with the owners we found that there had been a divorce and the dog was living with the husband. Without his support system, the dog was being left outside for up to 10-12 hours a day due to the husband's work schedule.

We stated that this could not continue, and gave several suggestions, such as in-home dog care, including a dog walker. Any type of support to give the dog relief and let him live inside. They liked these ideas and would look into it. But, we then received the third call of the dog being picked up and we got the call. That was enough for us and we told the owners we would take the dog back. Jenny drove to California and picked up the dog. Nearly 40 hours round trip!

Once home, Duke needed a lot of attention. He needed worming and he had chewed his legs out of frustration and loneliness and had large wounds on his legs. We dove in and started to get this dog the attention he needed and began socializing him with our clan. He started to blossom. He began to show a lot of potential, and clearly he was a very nice Stafford - maybe we could show him?

Once he was in better shape, we decided to enter him in a show. He first weekend out he lost the first day, and picked up a point the next day. From that point on he has begun adding points. As of this writing he has 10 points - no majors yet, but he is of good enough quality to get these and obtain his championship.

"Duke" may have found a permanent home with us. He is a very sweet dog and a bit of a clown. Or we may place him if the right situation comes along - we certainly do not need any more dogs, but sometimes you have to do what you have to do and in this case, this was the right thing to do.



Dana and Jenny) Trugrip Staffordshire Bull Terriers (Since 1969)

Editors note: since this article was submitted, this lucky Staffy finished his championship in style!



By Karin Parish

One very hot July afternoon I decided it was time to get some cold Lemonade. I opened the refrigerator and pulled out the large wax carton of Paul Newman Lemonade from the shelf on the refrigerator door. I had just pulled it from the door shelf, and as I swung around to the counter as I held the carton, I felt drip drip drip on my toes. My mind immediately raced at the fact that I must have a big leak at the bottom of the carton. It's going to put sticky lemonade all over the floor – "don't move" my brain said. My open palm flew to the bottom of the carton to try and plug the leak that was still dripping on my toes. I felt beneath the carton to the right and left and it was dry, yet I felt drip drip. OH NO my mind raced, OH NO my mind must be on the edge of the seam. OH NO my mind flew into overdrive. How much had spilled in be a sticky bottom of the refrigerator. OH NO, its going to be a sticky Drip Drip Drip.. mess. All the while I am feeling the bottom of the carton, the sides of the carton. Still the carton was dry. Dottie looking up at me as she stood over my bare foot with her head down. She had had a big drink to know food is wet beard dripping. She is also smart enough to know food is always at the open door peering in. People who do not have terriers just don't understand what it's like to live with bearded dogs.



From the AKC WEBSITE CAN DOGS EAT PEAS?

We're talking about green peas, specifically: snow peas, sugar snap peas, and garden or English peas. You can feed your dog fresh, frozen, or thawed peas, but do not give him canned peas. Like many canned vegetables, canned peas typically have a lot of added sodium, which is harmful to dogs (and humans).

As far as pea pods go, as a rule of thumb, if humans can eat the pod, so can your dog. Garden peas, of course, must always be shelled. But be cautious with pods, because they can get stuck in your dog's throat and cause choking. And as with any new food, watch for adverse reactions, such as [diarrhea](#) or [vomiting](#).

The good news is that peas are among the healthiest human snack for your dog. They're a great source of vitamins, including A, K, and the B vitamins. They're packed with minerals like iron, zinc, potassium, and magnesium. They're also rich in protein and high in fiber. Peas contain lutein, an anti-oxidant good for skin, heart, and eye health.

Of course, as with any human food, peas can have drawbacks. Don't give them to dogs that have [kidney problems](#). Peas contain purines, a naturally occurring chemical compound, also found in some food and drinks. Purines produce uric acid that's filtered through the kidneys. Too much uric acid can lead to kidney stones and other kidney conditions.

Dogs don't need fruits and vegetables in their diet the way humans do. They're carnivorous in the wild, eating vegetation when meat sources are scarce. But as an occasional snack or treat for your dog, peas are a healthy low-calorie option. So, both you and your canine pal can enjoy them while they're fresh and abundant.

Editor's Note: the AKC website has a wealth of articles for our dogs.



B –Match- Hot Hot Hot - by

Karin Parish

On June 9th we had our B Match which was held at Academy of Canine Behavior in Bothell.



Delores Dills was our judge. Delores was a good choice as she handles lots of our terriers in the show ring and we all love her. We had a very small turn out but we were all in good spirits. The weather : “damp and raining and muddy”. Just perfect for small little white dogs before going into the ring. How perfect when you have a young puppy who has to pee and is white!

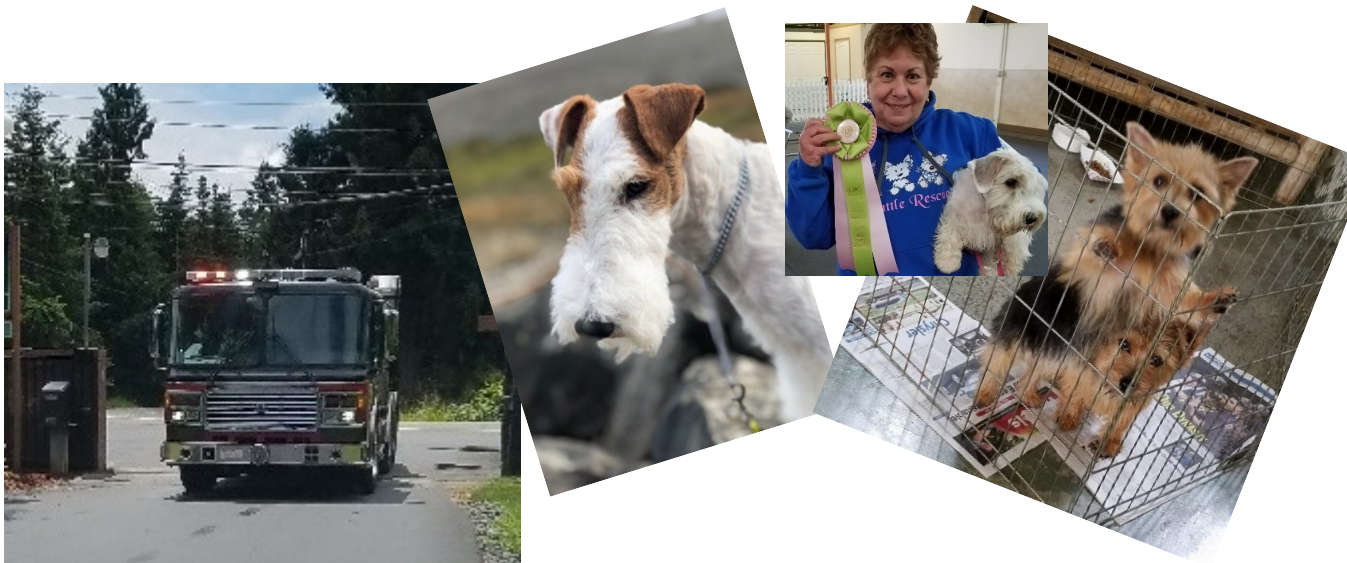
Jeannette, Sandy and Bob Davis did a great job setting up the ring and tables. I was lucky enough to win BIS puppy. My 5 mo old Sealyham Terrier Puppy named Dott (Raindancer’s Winter Moon). We had Susan’s Wire Fox, named Jack, and two cute Norwich babies, and a Westie .

We had salads for lunch. As we were at our lunch table chowing down, someone next to me looked up and said, “Is it normal for all that smoke to come out of the ceiling vent?” We all glanced up and shrugged and kept eating. I think I said someone should call the manager. I commented, its probably an electrical fire. For some

reason, none of us reacted. I suppose food is always a distraction.

Bob Davis went to contact the manager via cell phone. No answer. Left message about smoke coming out of the vent. We still ate lunch until we looked up again and saw smoke coming out of more ceiling vents, then we figured, time to pack it up. We still cleaned up, put the chairs away and by this time the manager showed up and opened the electrical panel and turned off all the power. (Normally electrical fires start in the air conditioner in the ceiling)

We were still cleaning up and toting things out when we heard FIRE ENGINES. The pace was picked up as we sprinted to the cars so we wouldn't be blocked in by a fire engine trucks. (Mind you we didn't sprint out of the building). It was an electrical fire and the fire department told the manager that we'd caught it in time. The outcome: No fire hoses needed and Two trays of brownies were saved!





REGISTRATION FORM

Myra Savant Harris, RN Seminar

SEMINAR COST PER PERSON \$125.00*

****Early Bird Discount! Register by September 1 and pay only \$115.00 per person***

Space Limited to 50 seats/No Refunds

Lunch \$12 per person or bring your own
Snacks, coffee, water provided

LUNCH: Catered by Panera

Cafe Sandwich Box: served with whole sandwich, bag of chips, pickle spear and cookie.

Turkey _____ Ham & Swiss _____ Veggie _____ Tuna _____

Cafe Salad Box: Served with a whole salad, small baguette and cookie.

Caesar: _____ Greek: _____ Seasonal Greens: _____

Please make checks payable to: WHWTCOPS

Name: _____

Address: _____

City: _____ Zip: _____

Email: _____ Phone: _____

Make check payable to WHWTCOPS

Send registration with check to Chairperson:

Cynthia Lockwood, 18932 194th Avenue NE, Woodinville, WA. 98077

PH: 425 788 6795 Fax: 425 788 4355

WEST HIGHLAND WHITE TERRIER CLUB OF PUGET SOUND



PRESENTS



MYRA SAVANT HARRIS, RN

Canine Reproduction & Whelping and Puppy Intensive Care Seminar

Saturday November 3, 2018 - 9:00 am - 4:00 pm

Brightwater Environmental Education and Community Center
22505 WA Route 9
Woodinville, WA. 98072

Whether you are experiencing your 1st or 20th litter, have ever lost a puppy, lost a bitch, or had a breeding that did not take, this seminar is for you. Saving the life of just one pup, or that one special bitch will make this seminar a worthy investment. Myra teaches techniques that have helped save countless pups and bitches. Things you just don't think of without having lived it.

Myra's excellent book "*Canine Reproduction and Whelping*" covers the basics of breeding. Myra explains the characteristics of sperm and egg, the role of diet in whelping and how to whelp pups. The seminar is intended to assist you to get your bitch in whelp, get her to stay in whelp, and to deliver healthy pups; she devotes time to stuck-puppy, breech puppy and post-partum care.

Another book by Myra "*Puppy Intensive Care*" shows breeders how to set up an intensive care unit at home for delivering the support that a sick or weak pup might need. Myra also teaches how to tube feed, use sub-Q fluids, how to deliver oxygen, etc. All techniques to keep your puppy losses to a minimum.

Myra also focuses on sperm in every conceivable way including counts and how to maximize your stud dog's capabilities. It includes the bitch's reproductive system from first heat to spay and includes all the information you will need to coordinate the stud dog with the bitch's timing for breeding(s).

TOPICS TO BE COVERED AT THE SEMINAR

- Common misconceptions about conception
- How to maximize sperm viability and protect your stud dog's virility
- How to care for your bitch and ensure her health
- How to recognize pups in distress, assess their problem in order to save their life
- Progesterone testing
- How to get bitches in whelp
- How to deliver healthy pups
- Stuck puppy, breech puppy
- What you need to have on hand for intensive care nursery.

Myra will also have her books available for sale and complete warming kits.

This issue's puppy photos! There is something magical about Sealyham puppies and this basket of puppies proves that! What a beautiful group of kids! Thanks for the photo, Karin Parish! Send in your photos for the next issue! JPEG Format only! No show photos unless they were candid shots.



See you in the winter issue! Please send items as you have them. I start entering as I receive them and hopefully nothing gets lost that way!